

Drivers Side Inner Fender
Under Seat

Example: DE51V=Vehicle Series
500001=Production number
In Sequence

Every Van

DE51V-500001

DF51V-500001

Carry Truck

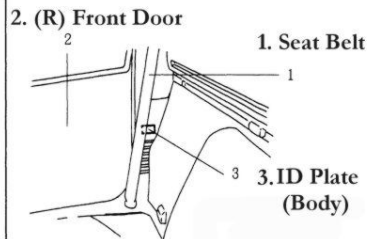
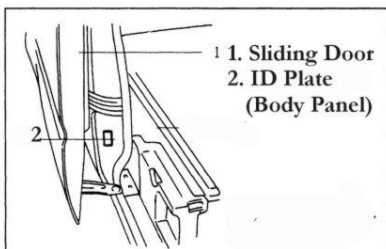
DC51T-100001~

DD51T-100001~

DC51B-100001~

www.yokohamamotors.com

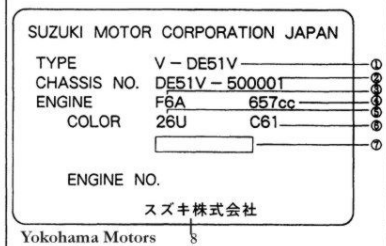
Other Locations of ID Plates



Note: Model Years do not exist in Japan, only Series.

Example: Car Manufactured in 2000 but not sold until 2008=2008. Therefore, vehicles go by codes and manufactures date means nothing in Japan.

*Note: For manufactured year check the seat belt tag or any paperwork you have from your dealer.



ID Plate Decoder

1. Vehicle Series
2. Vehicle VIN Number
3. Engine Series
4. Engine True Size(cc)
5. Body Color Code
6. Interior Color Code or Package Code
7. Makers Code (For Sales Dept. Information)
8. Suzuki Corporation(Japanese)

Engine & Transmission Identification Location

