

Daihatsu Vehicle & Production Code Data

Yokohamamotors.com

All Vehicles & Parts for the Following Vehicles Available

Note: Some Parts may be discontinued by the manufacturer for older vehicles.

Example: 7707=1977/July 8006=1980/June

Vehicle MFG Code 車名No.	Production Dates 生産始終	Vehicle Name 車名	Vehicle Series 型式
1101	7707-8006	Cuore クオーレ	L40, L45
1111	8006-8508	Mira ミラ & Cuore	L55, L56
1121	8508-9002	Mira ミラ & Cuore	L70, L71
1131	9003-9501	Mira ミラ	L200, L21, L220
1171	9408-9808	Mira ミラ	L500, L502, L510, L512
1181	9810-0212	Mira ミラ	L700, L710
1321	0212-0508	Mira ミラ	L250, L260
11D1	0508-0712	Mira ミラ	L250S, L250V, L260S, L260V
17D1	0612-NA	Mira ミラ	L275S, L285S
1311	0208-0410	Gino ジーノ	L700, L710, L701, L711
1351	0411-0511	Gino ジーノ	L650S, L660S
10D1	0512-0812	Mira/Gino ジーノ	L650S, L660S
18D1	0907-NA	Mira/Cocoa ココア	L675, L685
12D1	0511-NA	Esse エッセ	L235S, L245S
1201	8611-9207	Leeza リーザ	L100, L111
1211	9202-9808	Opti オプティ	L300, L310
1231	9811-0208	Opti オプティ	L800, L802, L810
1221	9508-9809	MOVE ムーブ	L600, L602, L610
1241	9810-0209	MOVE ムーブ	L900, L902, L910, L912
1271	0210-0412	MOVE ムーブ	L150, L152, L160
1281	0412-0508	MOVE ムーブ	L150, L152, L160
21D1	0508-0609	MOVE ムーブ	L150S, L152S, L160S
23D1	0610-NA	MOVE ムーブ	L175S, L185S
25D1	1012-NA	MOVE ムーブ	LA100S, LA110S
1341	0408-0505	MOVE/Latte ムーブ	L550S, L560S

Daihatsu Vehicle & Production Code Data

Yokohamamotors.com

All Vehicles & Parts for the Following Vehicles Available

Note: Some Parts may be discontinued by the manufacturer for older vehicles.

Example: 7707=1977/July 8006=1980/June

Vehicle MFG Code 車名N o.	Production Dates 生産始終	Vehicle Name 車名	Vehicle Series 型式
20D1	0505-0812	MOVE/Latte ムーブ	L550, L560
24D1	0808-NA	CONTE	L575S, L585S
1251	0111-0512	MAX マックス	L950, L952, L960, L962
33D1	0605-0904	SONICA	L405S, L415S
1261	0205-0509	COPEN コパン	L880
31D1	0510-NA	COPEN コパン	L880K
1301	9911-0312	NAKED ネイキッド	L750, L760
1331	0311-0506	TANTO タント	L350, L360
30D1	0506-0711	TANTO タント	L350, L360
35D1	0712-NA	TANTO タント	L375S, L385S
36D1	0912-NA	TANTO EXE タント	L455, L465
1501	7109-8311	HIJET ハイゼット	S38, S40, S60
1511	8104-8605	HIJET ハイゼット	S65, S66
1521	8605-9003	HIJET ハイゼット	S80, S81
1531	9004-9401	HIJET ハイゼット	S82, S83
1601	9401-9812	HIJET ハイゼット	S100, S110, S120, S130, S140
1651	9901-0411	HIJET & ATRAI ハイゼット	S200, S210, S220, S230
1681	0411-0511	HIJET ハイゼット	S200, S210, S220, S230
60D1	0512-0711	HIJET ハイゼット	S200P, S210P, 320G, 320V, 320W, 330G, 330V, 330W
63D1	0708-NA	ATRAI アトレー	S321G, S331G, S321V, S331V, S321W, S331W

Daihatsu Vehicle & Production Code Data

Yokohamamotors.com

All Vehicles & Parts for the Following Vehicles Available

Note: Some Parts may be discontinued by the manufacturer for older vehicles.

Example: 7707=1977/July 8006=1980/June

Vehicle MFG Code 車名No.	Production Dates 生産始終	Vehicle Name 車名	Vehicle Series 型式
65D1	0712-NA	HIJET	S201C, S211C, S201P, S211P
1631	9603-0107	Midget 2 ミゼット	K100
1671	0007-0411	ATRAI 7	S221, S231
2101	2101-8212	Charade シャレード	G10
2111	8301-8612	Charade シャレード	G11, G26, G30
2121	8701-9011	Charade シャレード	G100, G101, G102, G112
2131	9011-9301	Charade シャレード	G100, G101, G102, G112
2141	9301-0005	Charade シャレード	G200, G201, G203, G213
2161	9608-0207	PYZAR パイザー	G301, G303, G311, G313
2551	9801-0405	STORIA ストーリア	M100, M110, M112, M101, M111
40D1	0405-NA	BOON	M300, M310, M301, M312
45D1	1002-	BOON	M600, M601, M610
43D1	0812-	BOON LUMINAS	M502, M512
2561	0008-0508	YRV	M200, M201, M211
42D1	0604-NA	COO	M401S, M402S, M411S
2601	9703-0512	TERIOS & TERIOS KID テリオス	J100, J111, J131, J102, J122
66D1	0601-	PICO ピーコ	J200G, J210G

Daihatsu Vehicle & Production Code Data

Yokohamamotors.com

All Vehicles & Parts for the Following Vehicles Available

Note: Some Parts may be discontinued by the manufacturer for older vehicles.

Example: 7707=1977/July 8006=1980/June

Vehicle MFG Code 車名 N o .	Production Dates 生産始終	Vehicle Name 車名	Vehicle Series 型式
32D1	0510-NA	TERIOS KID	J111G, J131G
3001	7411-8109	Charmant シャルマン	A10, A20, A30, A40
3011	8110-8708	Charmant シャルマン	A35, A55
3021	8906-0005	Applause アプローズ	A101, A111
28D1	0601-1003	ALTIS アルティス	ACV40, 45
2511	7910-8210	DELTA 750 テルタ	KD20
3501	7610-8210	DELTA WIDE	KB10, KB11, KB12, TB10, TB11, TB15
3511	8211-8508	DELTA WIDE	KB26, YB20, YB21, YB26, CB21, CB26
3521	8508-8808	DELTA WIDE	KB26, KB27, YB20, YB21, YB25, CB21, CB27
3541	9201-9609	DELTA WIDE	YB21, CB21, CB22, YB25, CB27, CB31
3551	9610-9812	DELTA WAGON	SR40, SR50, CR40, CR41, CR50, CR51, KR41, KR42
3561	9901-0208	DELTA WAGON	SR40, SR50, CR40, CR42, CR50, CR52, KR42
4511	7708-8408	DELTA	V1#, V2#, V3#, V4#, V5#
4521	8409-9504	DELTA	V57, V75, V76, V78, V79, V98, V99, V115, V116, V118, V119

Daihatsu Vehicle & Production Code Data

Yokohamamotors.com

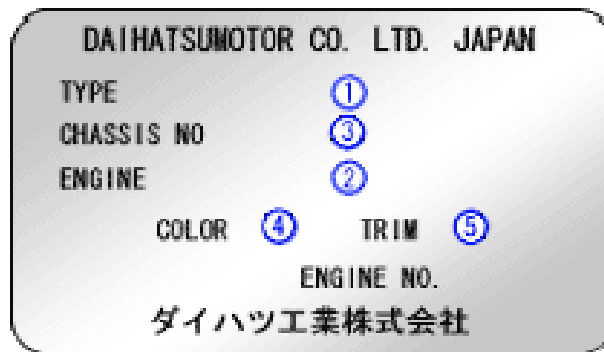
All Vehicles & Parts for the Following Vehicles Available

Note: Some Parts may be discontinued by the manufacturer for older vehicles.

Example: 7707=1977/July 8006=1980/June

Vehicle MFG Code 車名No.	Production Dates 生産始終	Vehicle Name 車名	Vehicle Series 型式
4601	7408-8403	TAFT タフト	F10, F20, F50, F60
4611	8404-9304	RUGGER ラガー	F70, F71, F75, F76
4621	9305-9705	RUGGER ラガー	F73, F78, F93, F98
4651	9007-9705	ROCKY ロッキー	F300
4671	9802-NA	Golf Cart	T010, T020

Example Plate: Late Model Series



Vehicles Listed: 1971 to 2007

Note: This list is for vehicles produced for the Japanese Domestic Market JDM.

List Provide by Yokohama Motors, Japan.

www.yokohamamotors.com

Date Produced April, 2011